

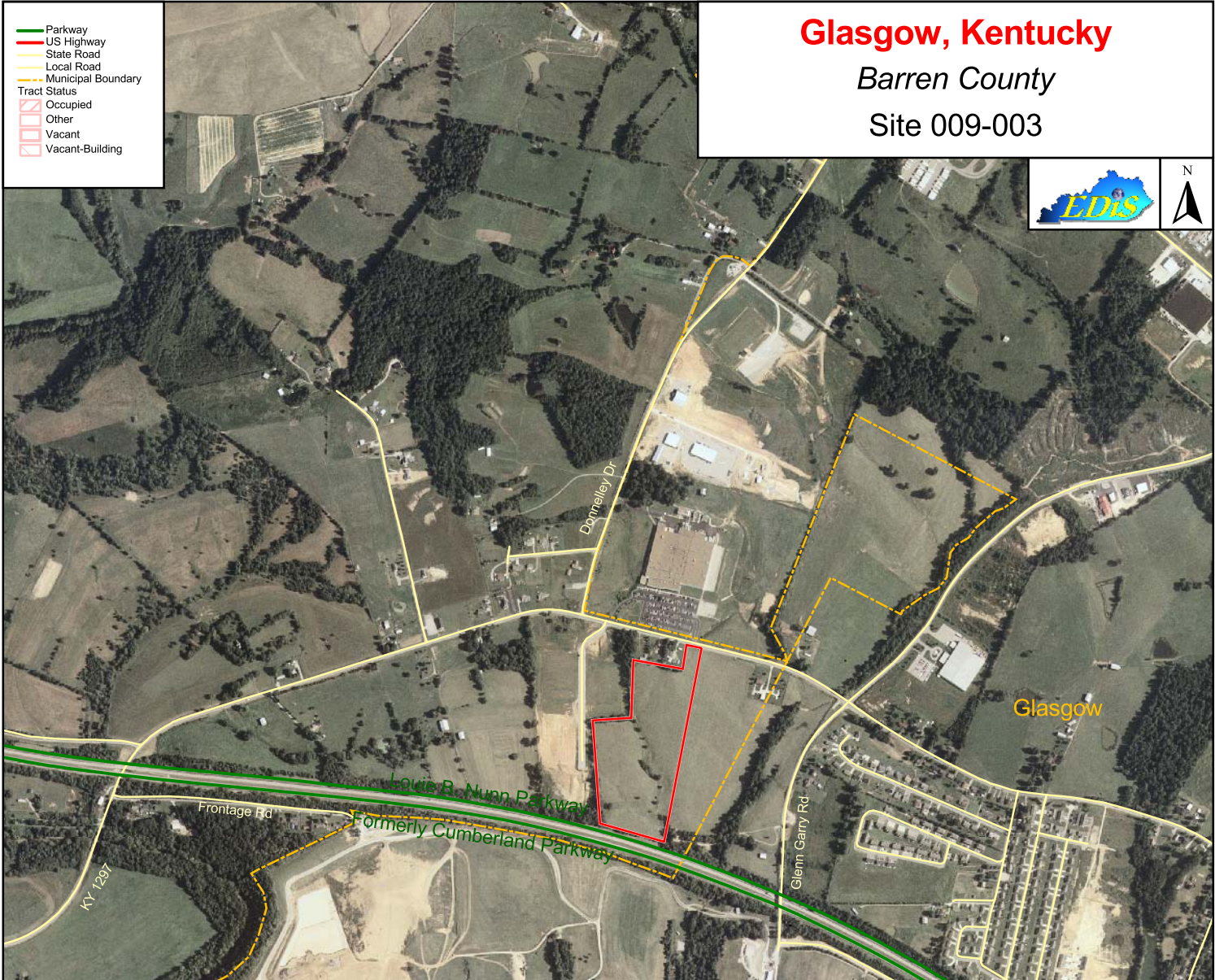
# Glasgow, Kentucky

Barren County

Site 009-003

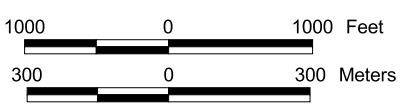


- Parkway
- US Highway
- State Road
- Local Road
- Municipal Boundary
- Tract Status
  - Occupied
  - Other
  - Vacant
  - Vacant-Building



## Glasgow -- Site 009-003 21.9 Acres/8.9 Hectares

**LOCATION:** Adjacent to southwestern city limits of Glasgow  
**ZONING:** Not Zoned  
**HIGHWAY ACCESS:** KY 1297 along northern boundary; Louie B. Nunn Parkway interchange approximately 2.3 miles southeast via KY 1297 and US 31E Bypass  
**COMMERCIAL AIR ACCESS:** Louisville International-Standiford Field  
Distance: 90 miles north of Glasgow  
**RAIL:** Not rail served  
**WATER:** Glasgow Water Company  
Size Line: 12-inch line along northern boundary  
**SEWER:** Glasgow Water Company  
Size Line: 8-inch gravity line 300 feet northeast of site; 15-inch gravity line 700 feet east of site  
**NATURAL GAS:** Atmos Energy Corporation  
Size Line: 4-inch line 500 feet northeast across KY 1297  
**ELECTRICITY:** Farmers RECC  
**BROADBAND (Type:Service):** DSL: Alltel, South Central Rural Telephone Cooperative Corporation Inc.  
**FLOOD DATA:** Not in 100-year flood plain  
**OWNERSHIP:** Private  
**SCHOOL DISTRICT:** Barren County Schools  
**PRICE PER ACRE:** \$25,000



For more information contact the Kentucky Cabinet for Economic Development, Department for New Business Development  
Old Capitol Annex - 300 West Broadway - Frankfort, KY 40601 - Tel:(502)564-7140 - Fax:(502)564-3256 - <http://www.thinkkentucky.com>  
All information regarding property is from sources deemed reliable, but no warranty or representation is made by the Commonwealth of Kentucky or any of its agencies as to its accuracy. It is subject to errors, omissions, change of price, prior sale, lease, or withdrawal without our knowledge. Further, no warranty or representation is made as to the environmental suitability or condition of the property. Prospective purchasers and/or lessees should perform their own due diligence in determining the suitability of a property for their intended use.

Map Date: 02/13/2008  
Photo Date: 8/16/2004