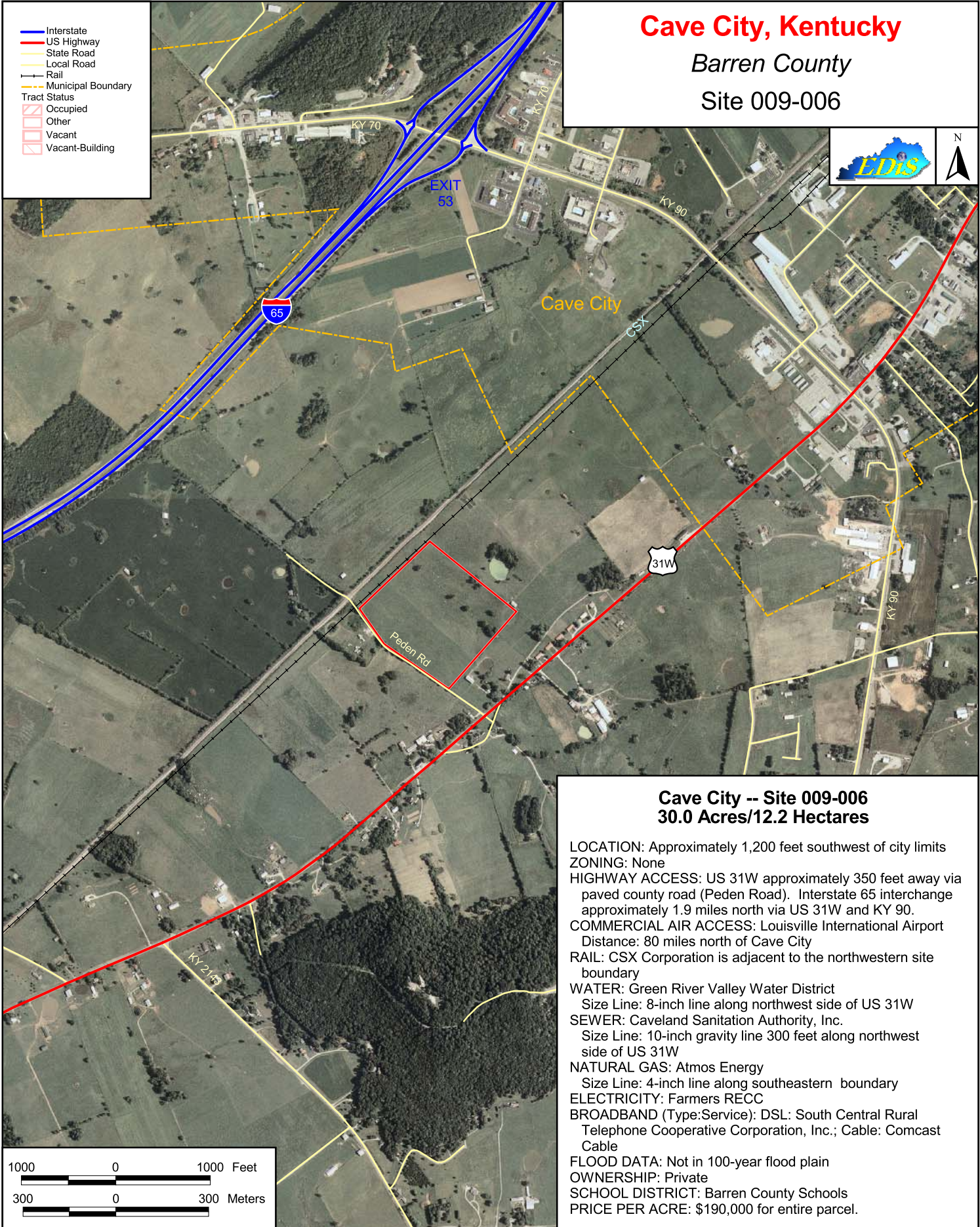


Cave City, Kentucky

Barren County

Site 009-006



- Interstate
- US Highway
- State Road
- Local Road
- Rail
- Municipal Boundary
- Tract Status
 - Occupied
 - Other
 - Vacant
 - Vacant-Building



Cave City -- Site 009-006 30.0 Acres/12.2 Hectares

LOCATION: Approximately 1,200 feet southwest of city limits
ZONING: None
HIGHWAY ACCESS: US 31W approximately 350 feet away via paved county road (Peden Road). Interstate 65 interchange approximately 1.9 miles north via US 31W and KY 90.
COMMERCIAL AIR ACCESS: Louisville International Airport Distance: 80 miles north of Cave City
RAIL: CSX Corporation is adjacent to the northwestern site boundary
WATER: Green River Valley Water District
Size Line: 8-inch line along northwest side of US 31W
SEWER: Caveland Sanitation Authority, Inc.
Size Line: 10-inch gravity line 300 feet along northwest side of US 31W
NATURAL GAS: Atmos Energy
Size Line: 4-inch line along southeastern boundary
ELECTRICITY: Farmers RECC
BROADBAND (Type:Service): DSL: South Central Rural Telephone Cooperative Corporation, Inc.; Cable: Comcast Cable
FLOOD DATA: Not in 100-year flood plain
OWNERSHIP: Private
SCHOOL DISTRICT: Barren County Schools
PRICE PER ACRE: \$190,000 for entire parcel.