

# Brownsville, Kentucky

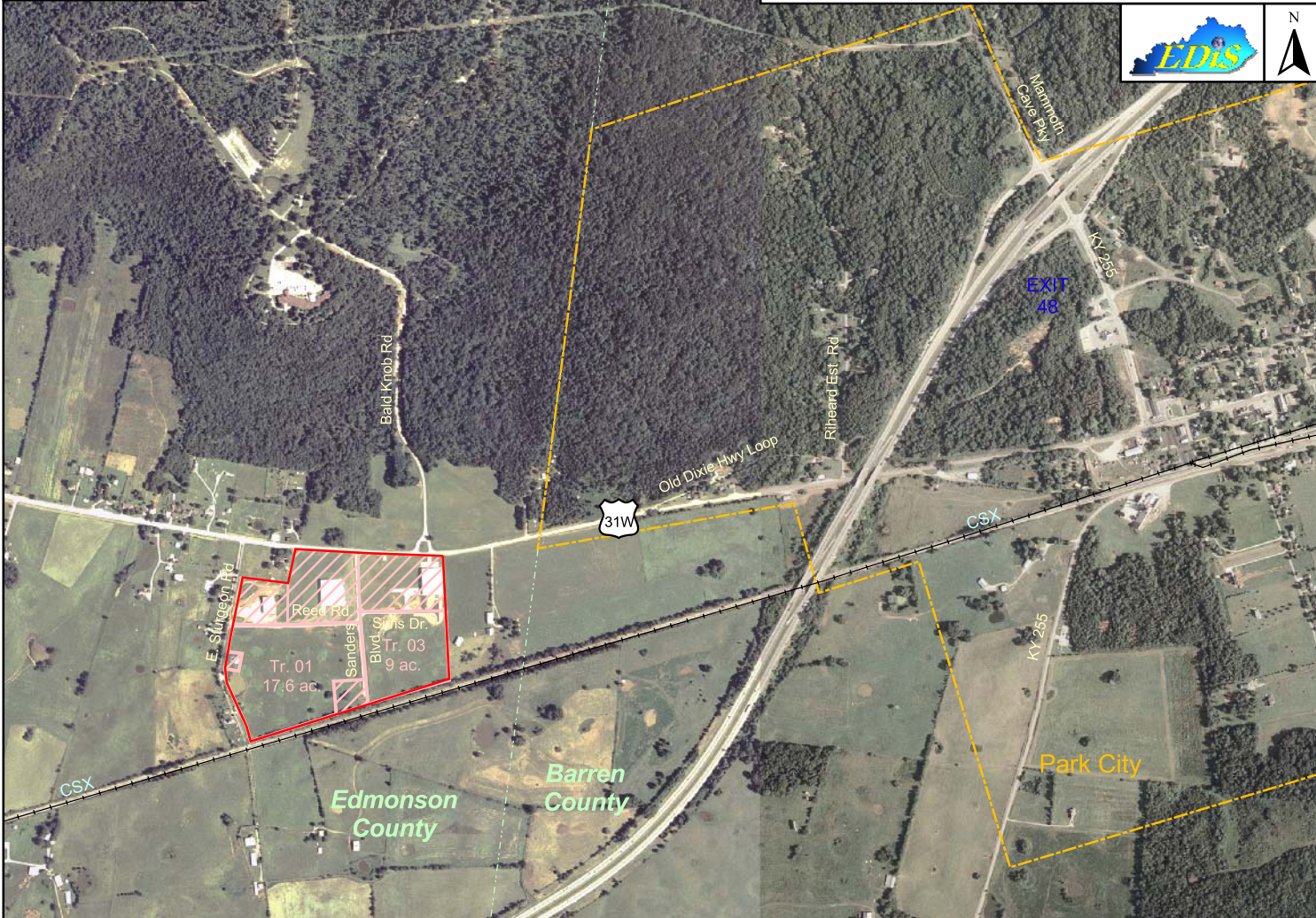
Edmonson County

Site 061-001



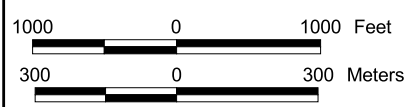
Legend:

- Rail
- Municipal Boundary
- County Boundary
- Tract Status
  - Occupied
  - Other
  - Vacant
  - Vacant-Building



## Edmonson County Industrial Park 26.6 Acres/10.8 Hectares

**LOCATION:** Eastern Edmonson County approximately 0.6 mile west of Park City (Barren County)  
**ZONING:** Not Zoned; protective covenants  
**HIGHWAY ACCESS:** US 31W along northern boundary; I-65 interchange approximately 1.3 miles east via US 31W & KY 225  
**COMMERCIAL AIR ACCESS:** Louisville International-Standiford Field  
Distance: 84 miles north of Brownsville  
**RAIL:** CSX Corporation runs along the southern site boundary  
**WATER:** Edmonson County Water District  
Size Line: 8-inch line along north side of US 31W; 6-inch line serves the park  
**SEWER:** Caveland Environmental Authority Inc  
Size Line: 6-inch force main line serves the park  
**NATURAL GAS:** Atmos Energy Corporation  
Size Line: 2-inch line serves the site  
**ELECTRICITY:** Farmers RECC; Warren RECC  
**BROADBAND (Type:Service):** DSL: Windstream Corp  
**FLOOD DATA:** Not in 100-year flood plain  
**OWNERSHIP:** Edmonson County Industrial Authority  
**SCHOOL DISTRICT:** Edmonson County Schools  
**PRICE PER ACRE:** \$15,000



For more information contact the Kentucky Cabinet for Economic Development, Department for New Business Development  
Old Capitol Annex - 300 West Broadway - Frankfort, KY 40601 - Tel:(502)564-7140 - Fax:(502)564-3256 - <http://www.thinkkentucky.com>  
All information regarding property is from sources deemed reliable, but no warranty or representation is made by the Commonwealth of Kentucky or any of its agencies as to its accuracy. It is subject to errors, omissions, change of price, prior sale, lease, or withdrawal without our knowledge. Further, no warranty or representation is made as to the environmental suitability or condition of the property. Prospective purchasers and/or lessees should perform their own due diligence in determining the suitability of a property for their intended use.

Map Date: 03/26/2008  
Photo Date: 8/16/2004